

POLY SEALER & THERMO SEALER

The PackRite Robot Air-Operated Jaw Sealer is a pneumatic-powered heat sealer that is available in two models. The Model RTP was developed for lab use and is ideal for medical applications. The machine seals Medical Pouches (Tyvec™/poly), Polyethylene foils and Dustcover without changing any sealing variables or controls and matches pouch manufacturer's seals. The Model RTP meets FDA standards for recordability of temperature, pressure and dwell. The Model R is ideal for Mil Spec materials, Mylar™*, foils, cellophane, krafts and polypropylene.

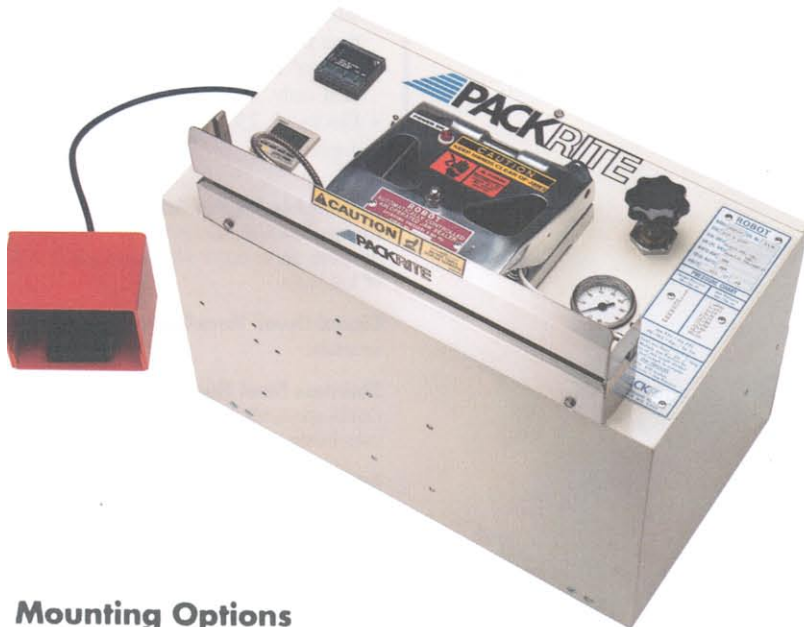
The sealing operation begins when the electric footswitch is depressed. A movable jaw then closes for a preset period of time at a controlled pressure and temperature. The result – high quality and uniform seals of superior integrity.

Heat is regulated by a digital time-portioning controller. Its calibrated dial has heat settings up to 600°F with an accuracy of ± 1/4% of full scale. A digital electric timer varies the dwell period from .001 to a maximum of 9.999 seconds.

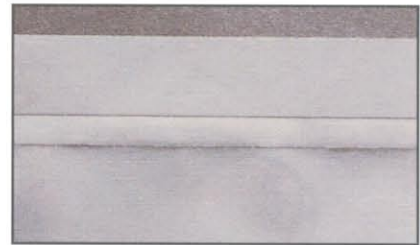
Pressure between the sealing bars is controlled by an air regulating valve in the supply line. Air and sealing pressures can be adjusted by a handwheel air valve on the machine's panel. A chart, also on the panel, provides quick reference of corresponding air and sealing pressures.

The Robot requires 30 to 100 PSI compressed air from an in-plant supply, or a small compressor with a minimum of 2.5 cubic feet/minute capacity to operate.

See reverse for complete list of specifications.

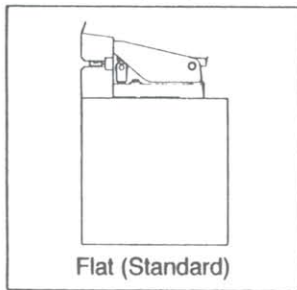


Embossed Code Dating is available as an option on the Model R only. Embosses daily, weekly, monthly and combination codes with up to ~~three~~ **three** digits. Codes above ~~three~~ **three** digits quoted on request.

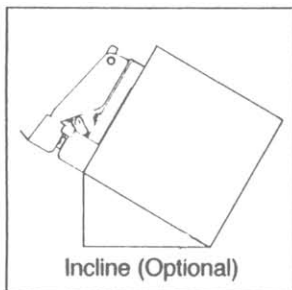


Flat Seal. The 3/8" wide flat seal is ideal for medical pouches.

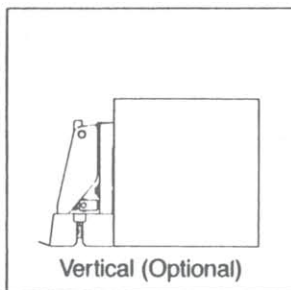
Mounting Options



For use in standing position.



For use in sitting position.



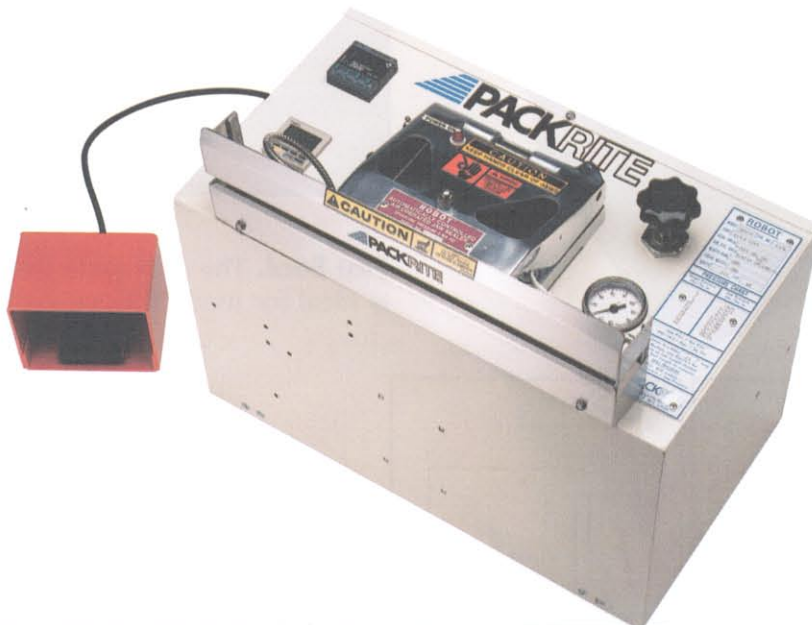
For use in sitting position.

*Tyvec and Mylar are registered trademarks of Dupont.

SPECIFICATIONS

Standard	Two models available – Model R (for barrier materials) Model RTP (for polyethylene, medical pouches and light foils.) Adjustable temperature controller. 10-second dwell timer. Air-operated sealing bars.
Sealing Speed	Up to 15 bags per minute.
Sealing Capacity	Model R – Multi-layer barrier bags. Model RTP – 8 mil single-thickness.
Seal Impressions	Model R – Flat, vertical crimp or horizontal crimp. Model RTP – Flat seal only, with standard Teflon* bar cover.
Seal Width	Model R – 3/8". (Special widths quoted on request.) Model RTP – 3/8". (Special widths quoted on request.)
Seal Length	12" and 15".
Temperature Range	Adjustable to 600°F. (Celsius and Fahrenheit readouts.)
Mounting	Flat, Standard, Vertical or Incline available (up charge).
Pressure Range	100 lbs./square inch maximum.

Timer Range	.001 to 9.999 seconds.
Air Requirements	30 to 100 PSI from in-plant supply or small compressor with 2.5 cubic feet/minute capacity. (NOT supplied with machine.)
Electrical	115 Volts, 60 cycles, 1-phase AC. (Options available.)
Shipping Weight	110 lbs. (Will vary depending on mount.)
Shipping Dimensions	25"L x 18 1/2"W x 21 1/2"H. (Will vary depending on mount.)
OPTIONS (Up charge)	<ul style="list-style-type: none"> • Universal Sealer Stand of Powder Coated (Almond) metal. • Embossed code Dating Bars: 4 digit standard on Model R. • Extra Sealing Heads quoted on request. • Incline mounting (30° angle away from operator) for operating in sitting position. • Vertical mounting (90° angle from table surface) for operating in sitting position. • Teflon* Bar Cover for Model R, Flat seal only. • Electrical: 230 Volts, 50/60 cycles, 1-phase AC.



Adjustable Digital Temperature Controller with thermocouple, controls temperature up to 600°F with accuracy of $\pm 1/4\%$ of full scale.

Digital Dwell Time Controller .001 to 9.95 seconds.

Stainless Steel Finger Guards built to OSHA specs, allows for safe handling of the bags being sealed.

Interchangeable Sealing Heads to accommodate all heat-sealable materials.

Hardwheel Air Valve to adjust sealing pressures.

Air Pressure Chart shows corresponding and sealing bar pressures for quick reference

Other Features:

- Air-operated Sealing Jaws for uniformity of seals.
- Air Pressure Indicator on panel, for quick reference.
- Heavy-duty Sealing Bars of half-brass, available in 12" or 15" lengths.

*Teflon is a registered trademark of Dupont.

For quotation or more information,
CALL TOLL FREE: 1-800-248-6868
1-262-635-6966 or FAX: 1-262-634-0521
PackRite / 3026 Phillips Ave / Racine, Wisconsin 53403-3517

"A Tradition Of Quality Since 1938."